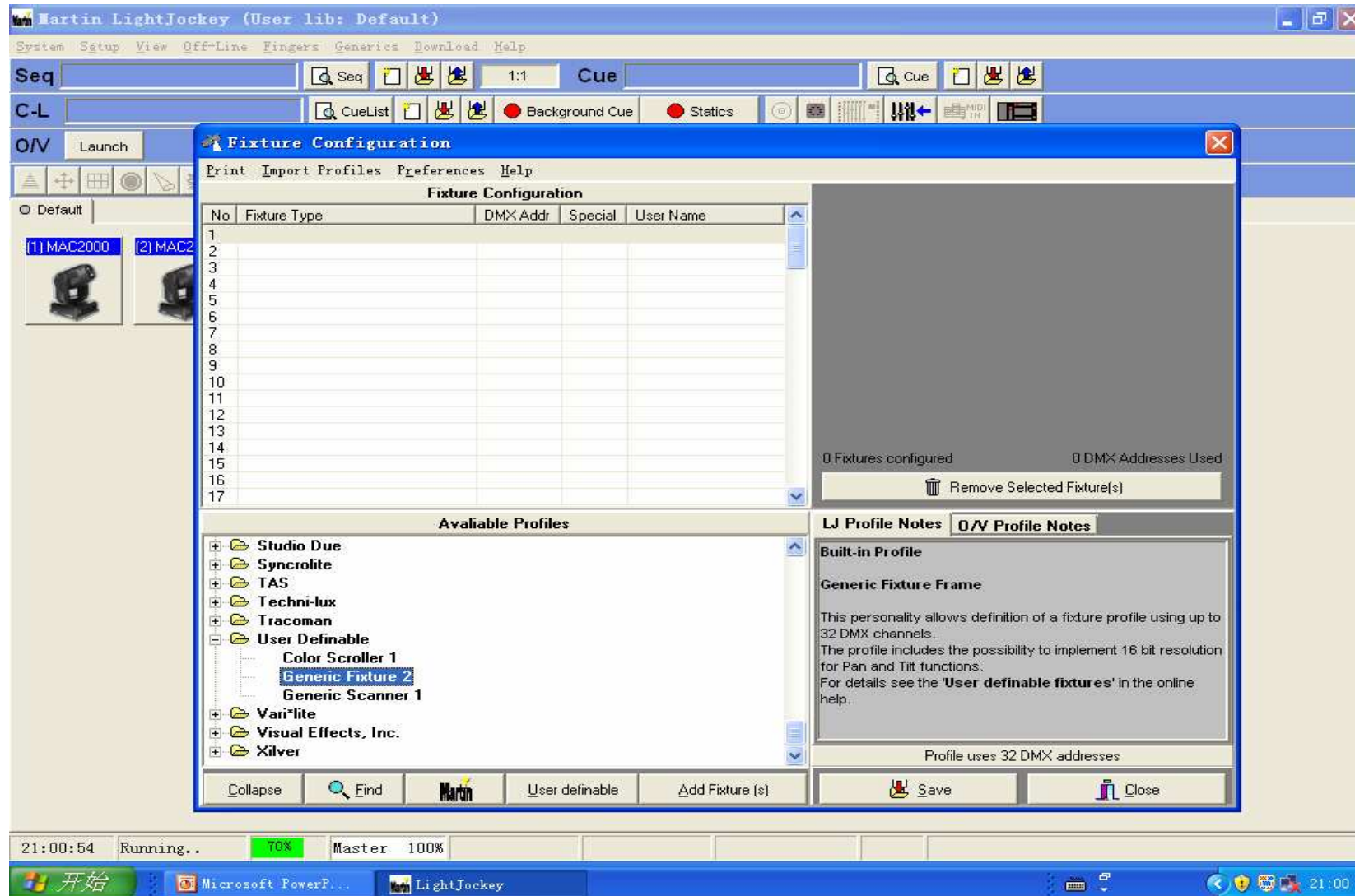


## 第一部分

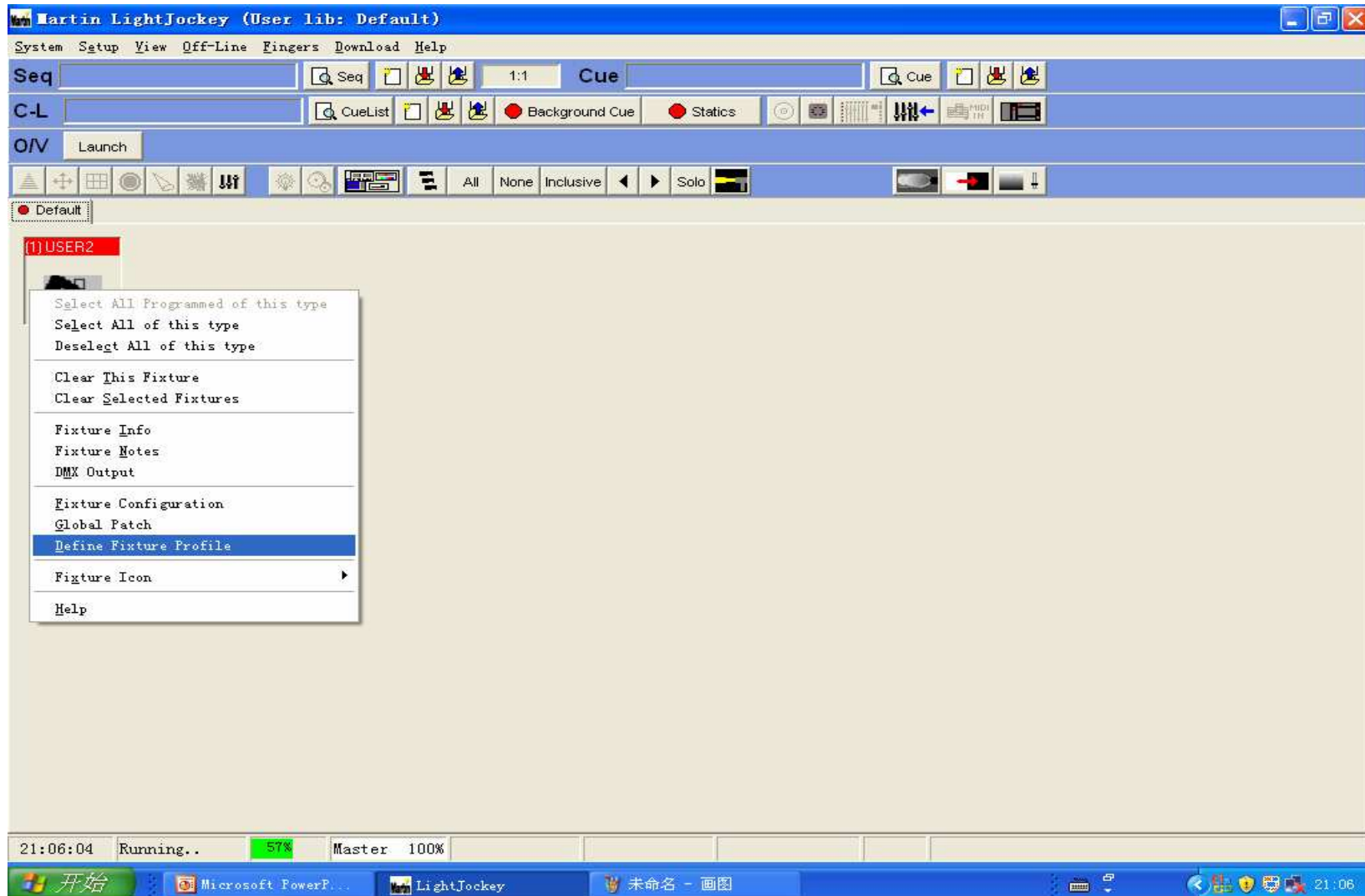
# LightJockey电脑灯控制台 灯库设置



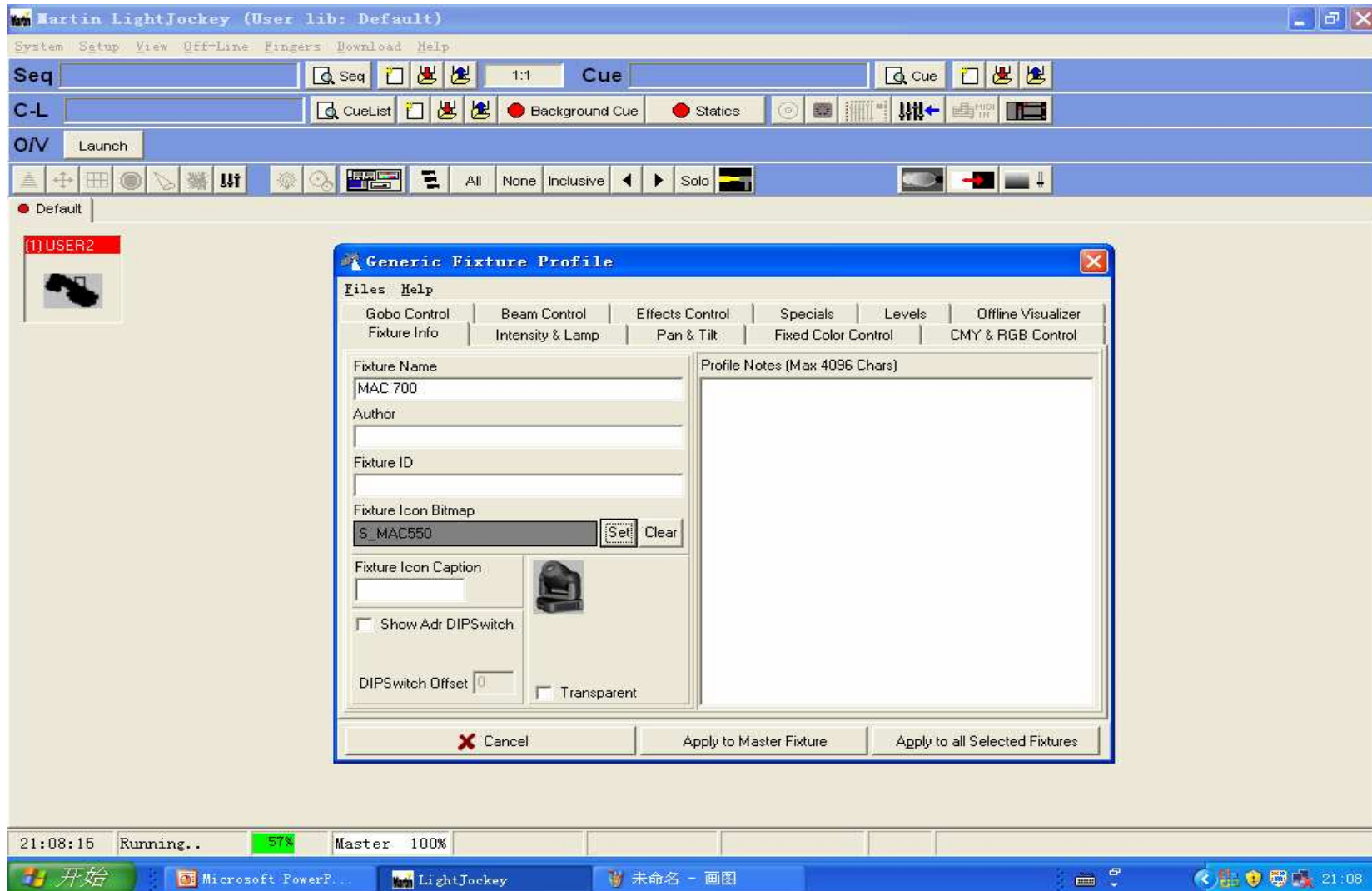
按Setup 选择Fixture configuration, 选择定义灯具



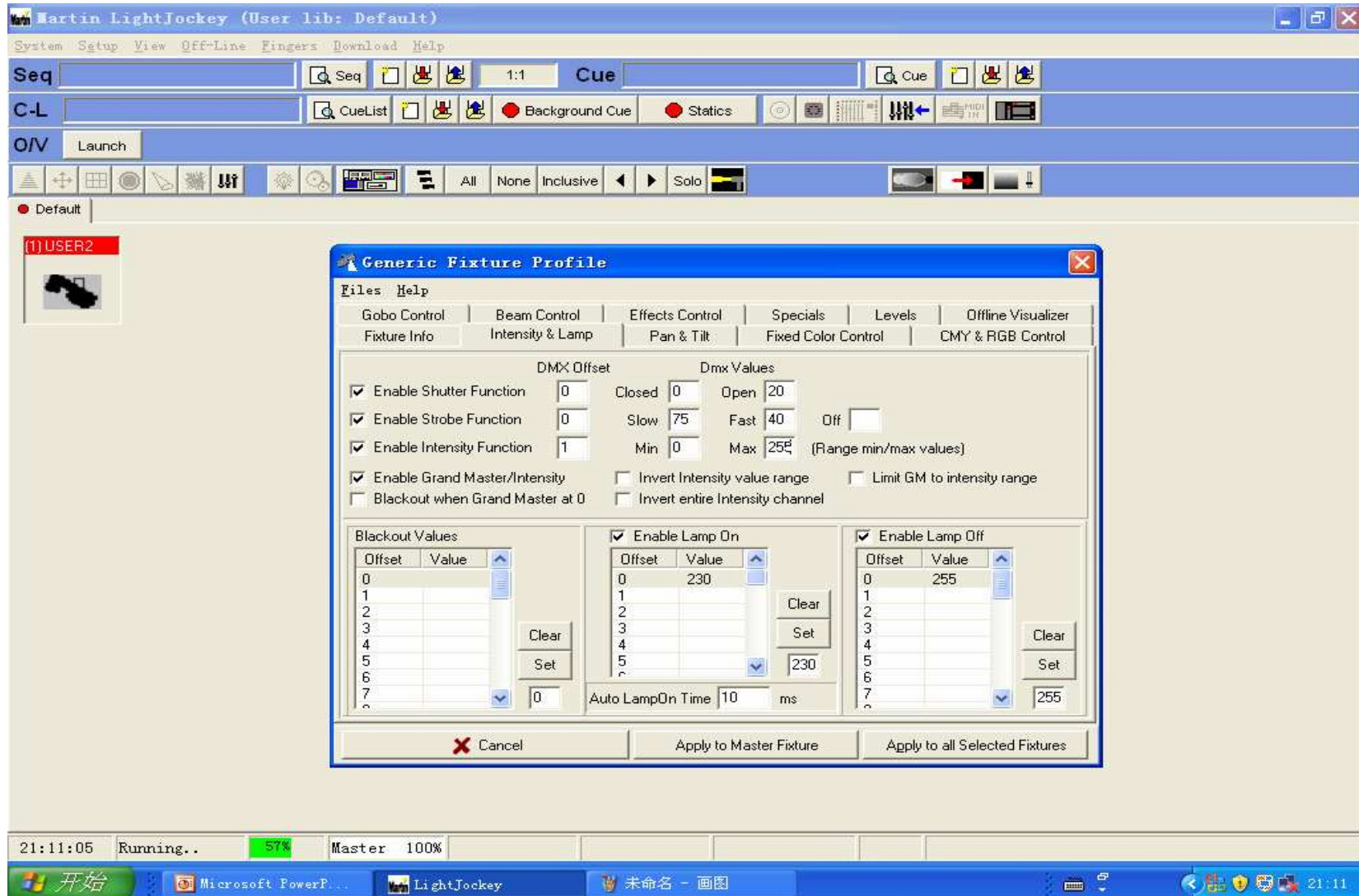
### 在主界面点击灯具按右键选择定义灯具



### Fixture Info 对灯具的基本信息进行定义

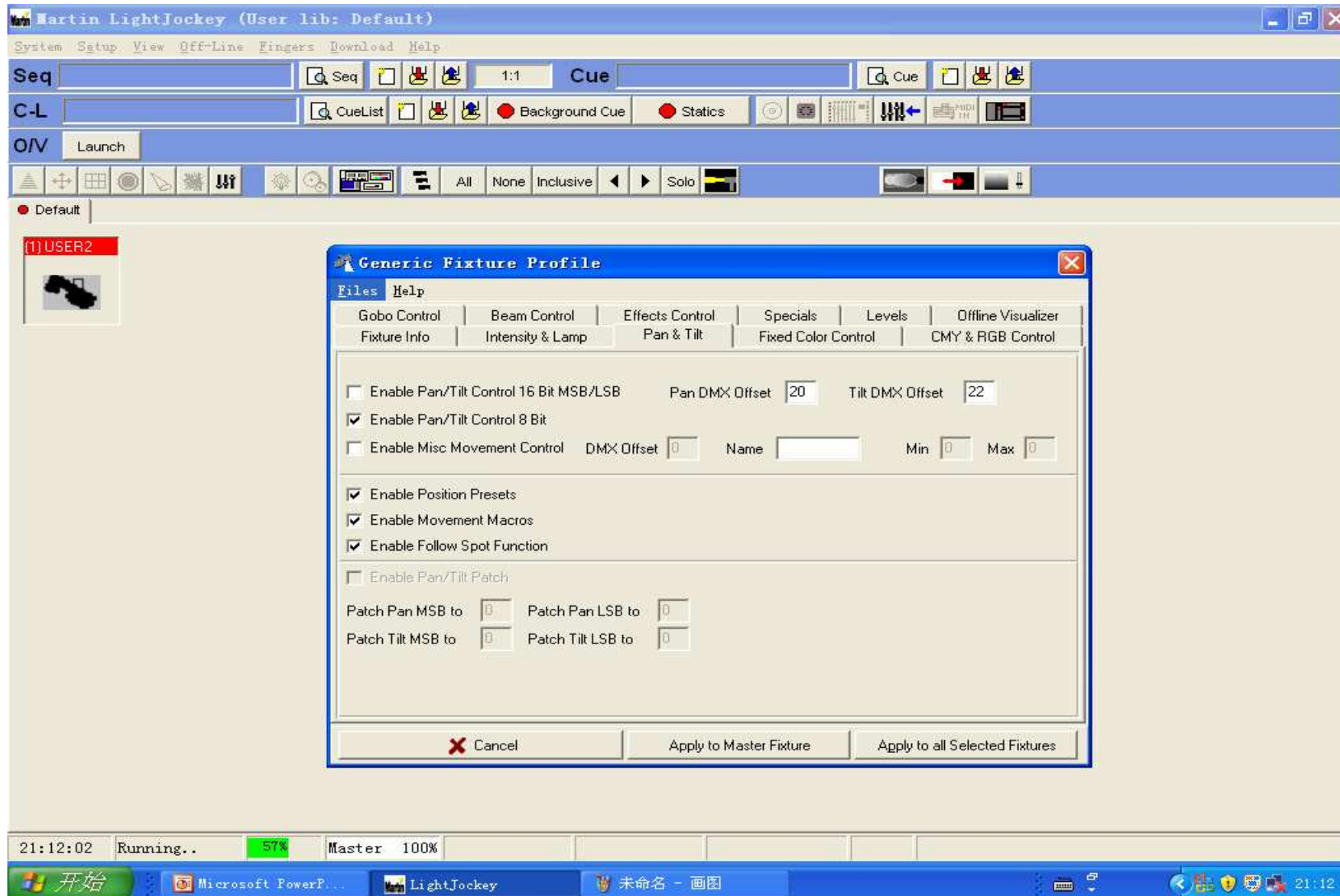


## Intensity&Lamp 亮度和灯泡设置

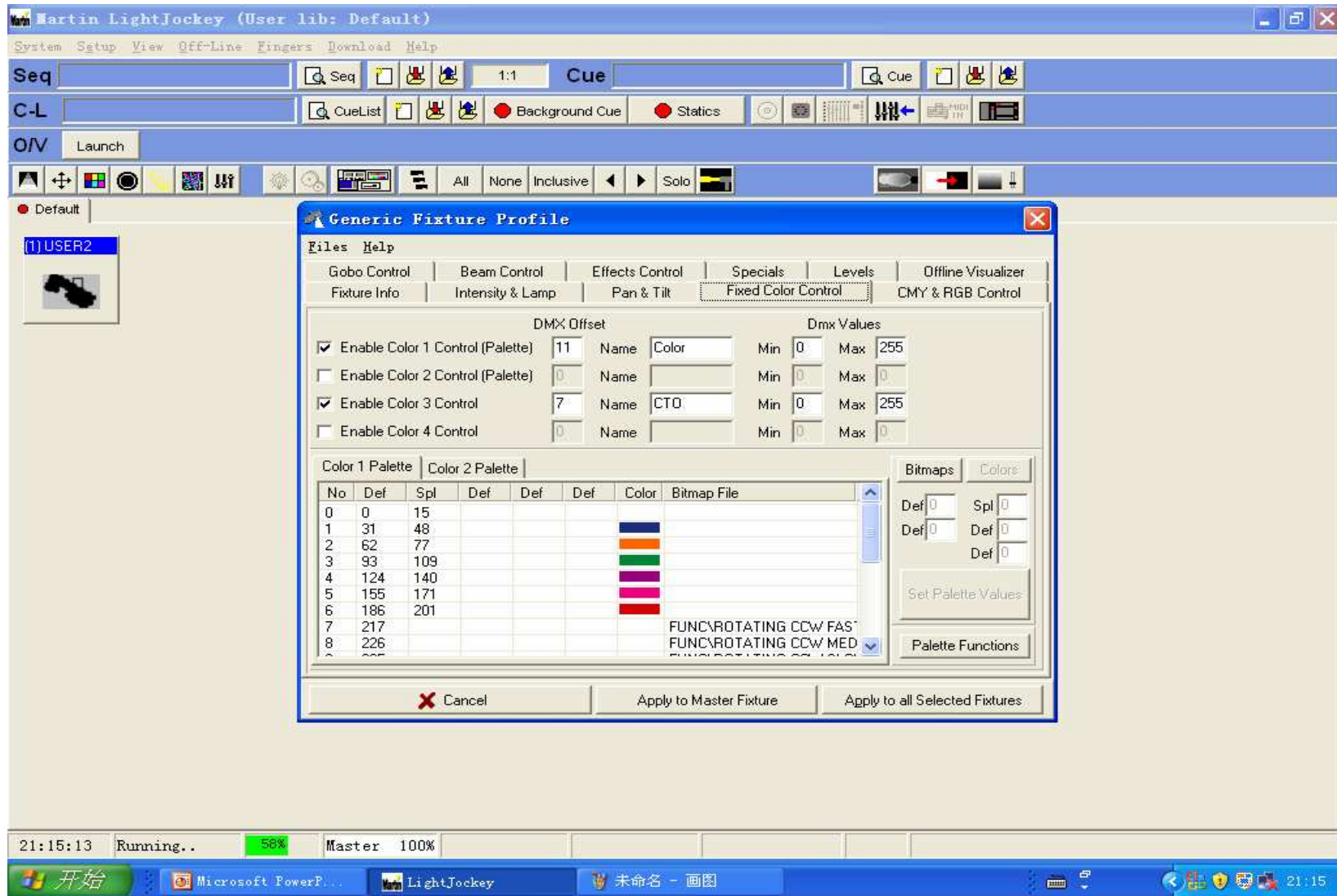




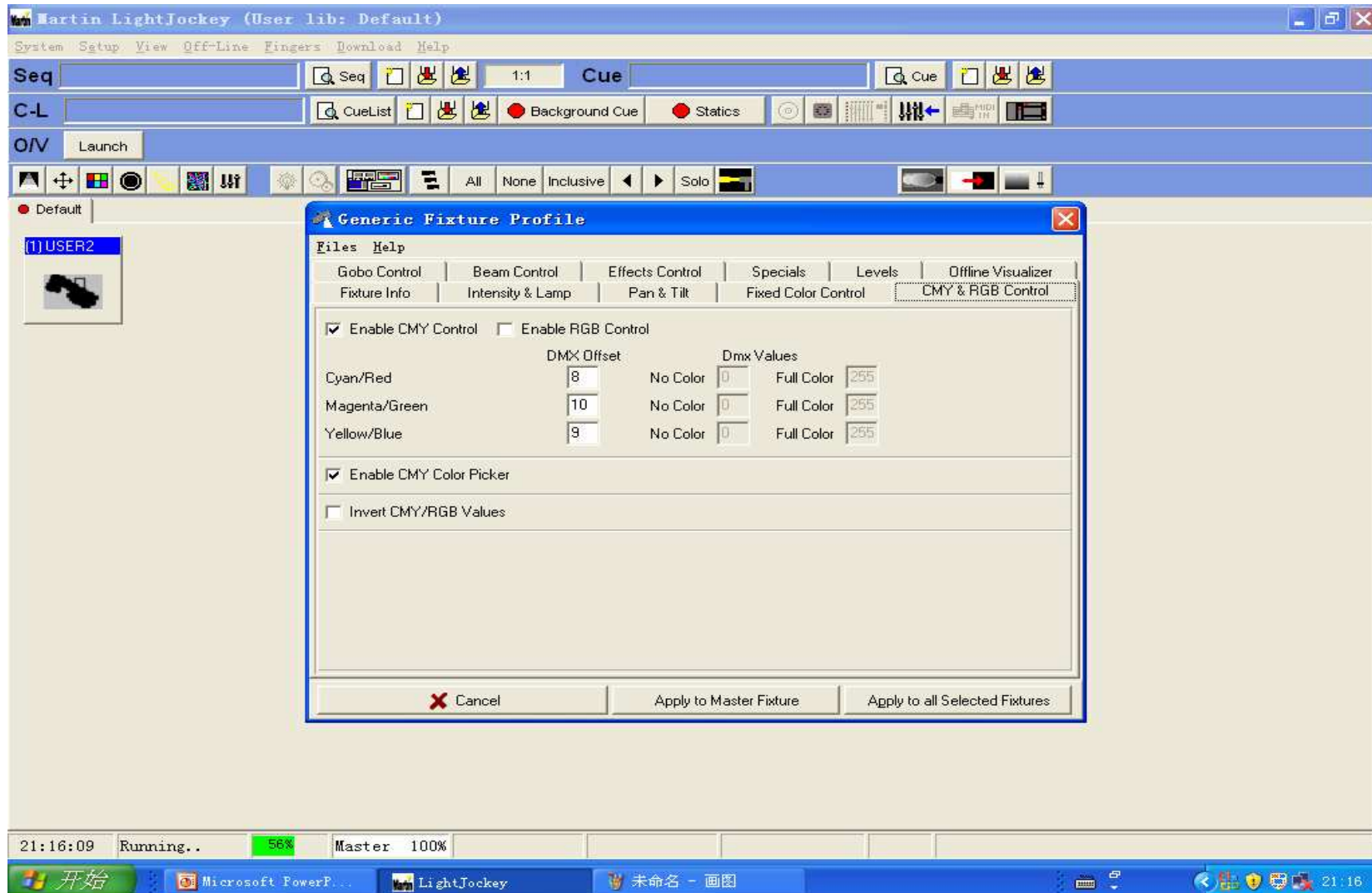
### Pan&Tilt 水平垂直移动设置



### Fixed Color Control 固定颜色轮设置

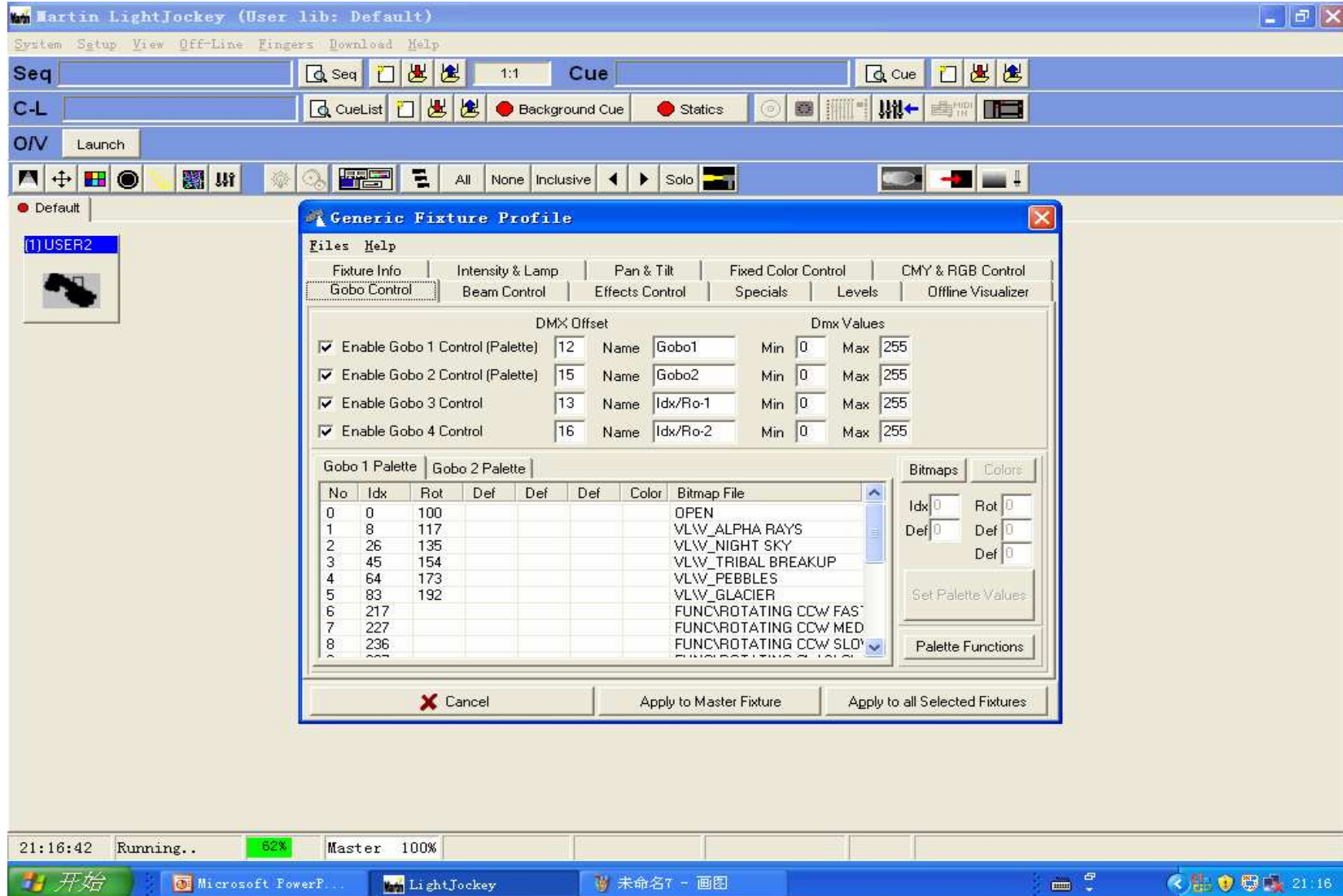


### CMY&RGB Control 混色设置

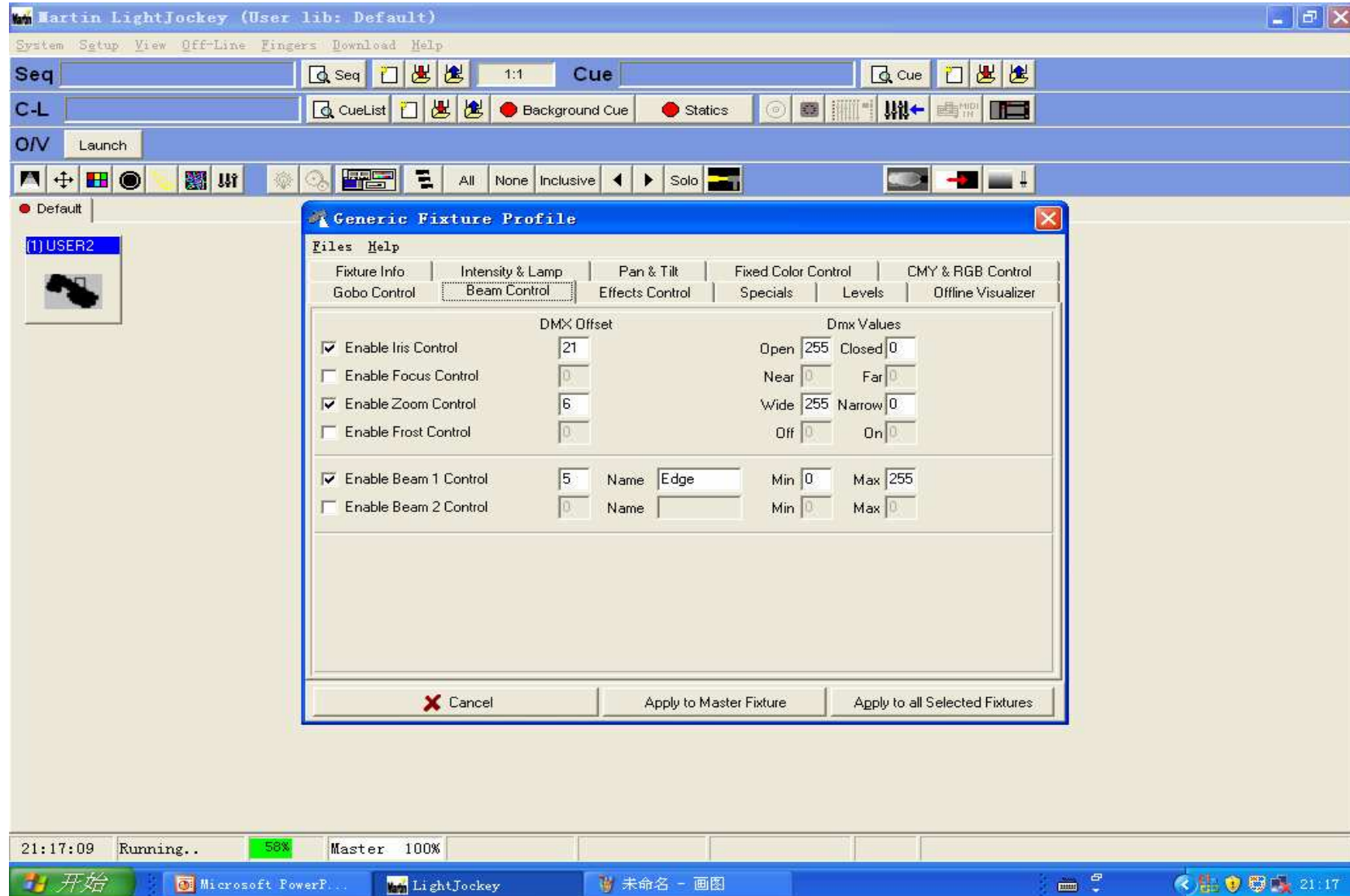




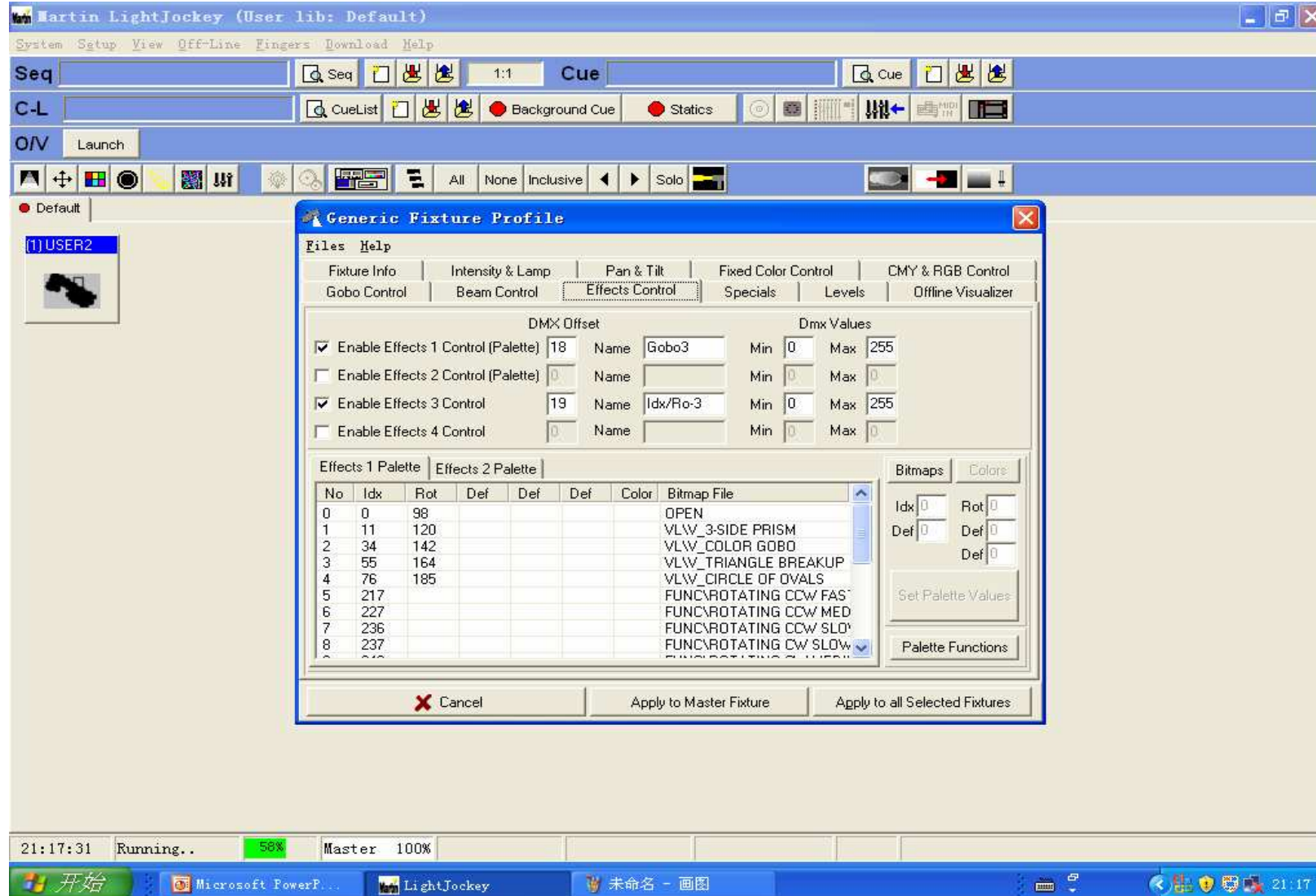
# Gobo Control 图案设置



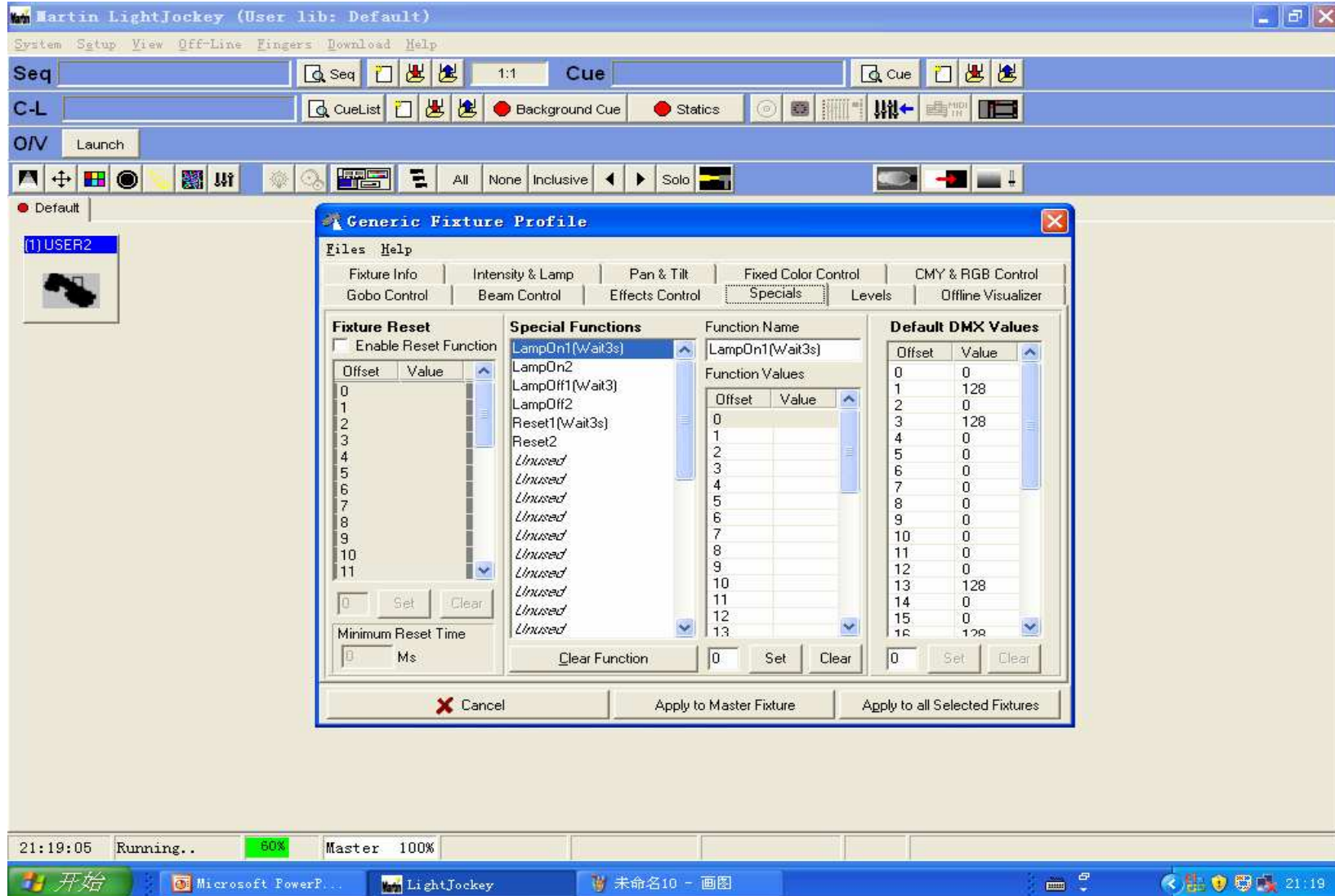
## Beam control 光束设置



### Effect control 效果设置

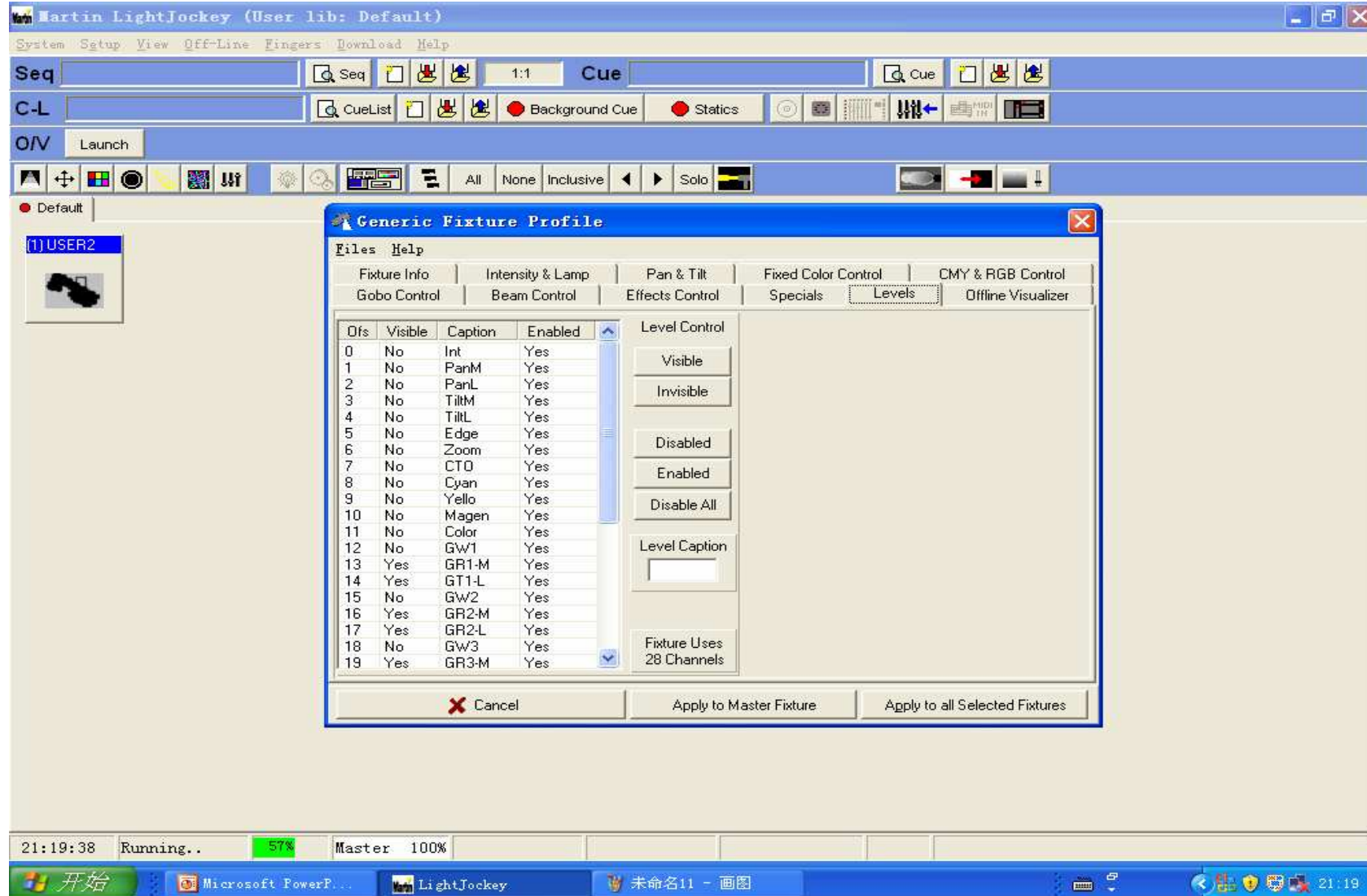


# Specials 特殊功能设置





### Levels 通道设置，可删除通道





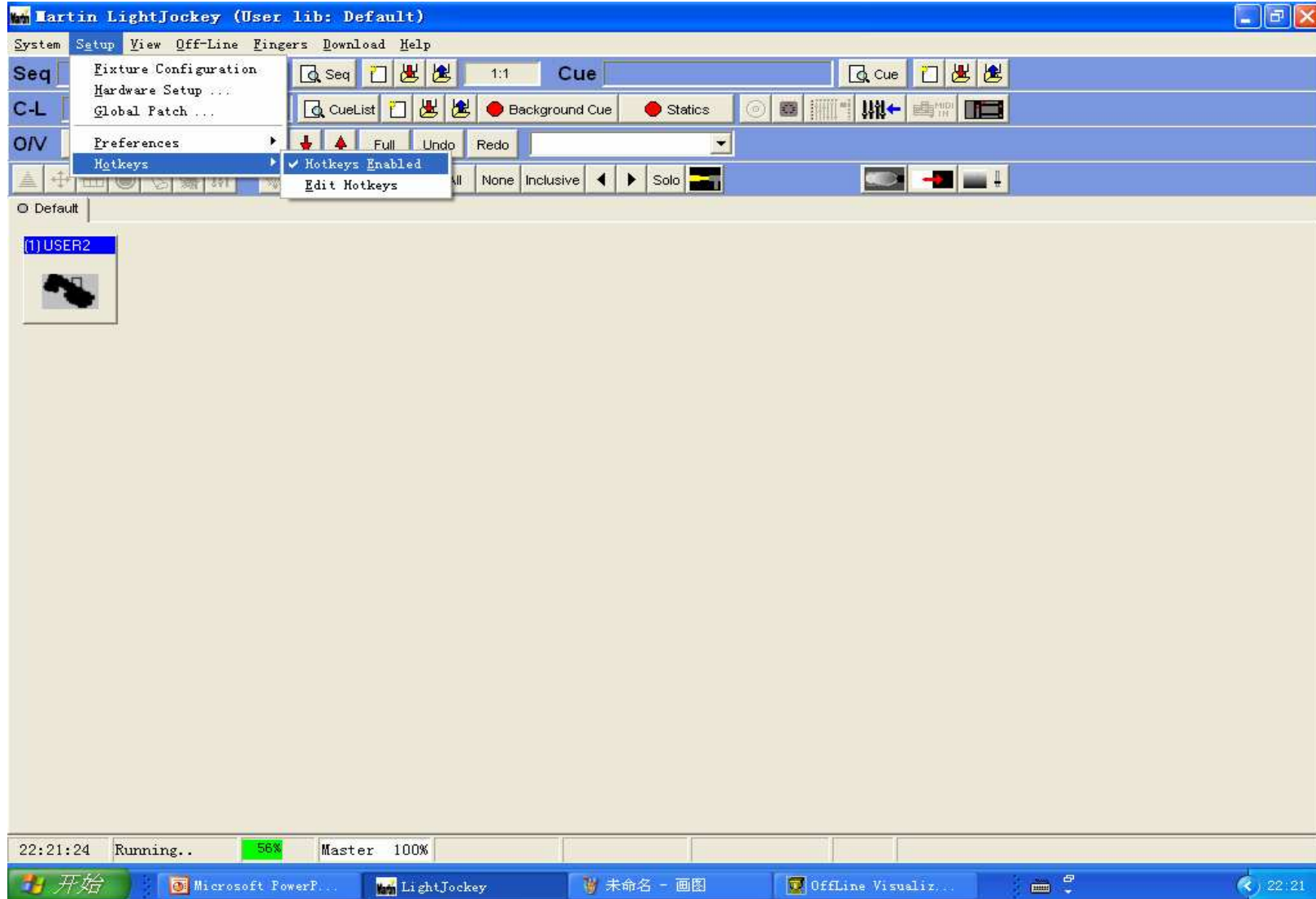
## 第二部分

# LightJockey电脑灯控制台

## 热键设置



### 热键设置 必须把Hotkey Enable打勾



**设置功能热键**      **程序热键**

**亮度控制常用热键**

**Edit Hotkeys**

Options Help

Key Combo   Scroll Lock Activated

Function	SCRL	Key Combo
Fade In 7 Sec		
Fade In 8 Sec		
Fade In 9 Sec		
Fade In 10 Sec		
Master Intensity Off		
Master Intensity Full		
Master Intensity +1		
Master Intensity +10		
Master Intensity -1		
Master Intensity -10		
*Blackout		
*FadeOut		
*Bump Master		
*Bump Sub 1		A
*Bump Sub 2		
*Bump Sub 3		
*Bump Sub 4		
*Bump Sub 5		
*Bump Sub 6		
*Bump Sub 7		
*Bump Sub 8		

Seq#	Seq Name	SCRL	Key Combo
0001	1		
0002	2		
0003	3		
0004	2		
0005	4		

22:23:59 Running.. 52% Master 100%

开始 Microsoft PowerP... LightJockey 未命名 - 画图 OffLine Visualiz... 22:23

CUE控制热键，相当于12条Seq

The screenshot shows the Martin LightJockey software interface. The main window displays various control panels for sequences (Seq), cue lists (C-L), and output (O/V). An 'Edit Hotkeys' dialog box is open, showing a list of functions and their assigned hotkeys. A red bracket highlights the 'Toggle Seq #1' through 'Toggle Seq #12' entries, indicating that these 12 hotkeys are used for CUE control.

Function	SCRL	Key Combo
All Slots Off		
All Slots On		
Toggle Seq #1		F1
Toggle Seq #2		F2
Toggle Seq #3		F3
Toggle Seq #4		F4
Toggle Seq #5		F5
Toggle Seq #6		F6
Toggle Seq #7		F7
Toggle Seq #8		F8
Toggle Seq #9		F9
Toggle Seq #10		F10
Toggle Seq #11		F11
Toggle Seq #12		F12
Clear Cue Slot		
Clear Sequence #1		
Clear Sequence #2		
Clear Sequence #3		
Clear Sequence #4		
Clear Sequence #5		
Clear Sequence #6		

HTP分组控制热键

**Edit Hotkeys**

Options Help

Key Combo   Scroll Lock Activated

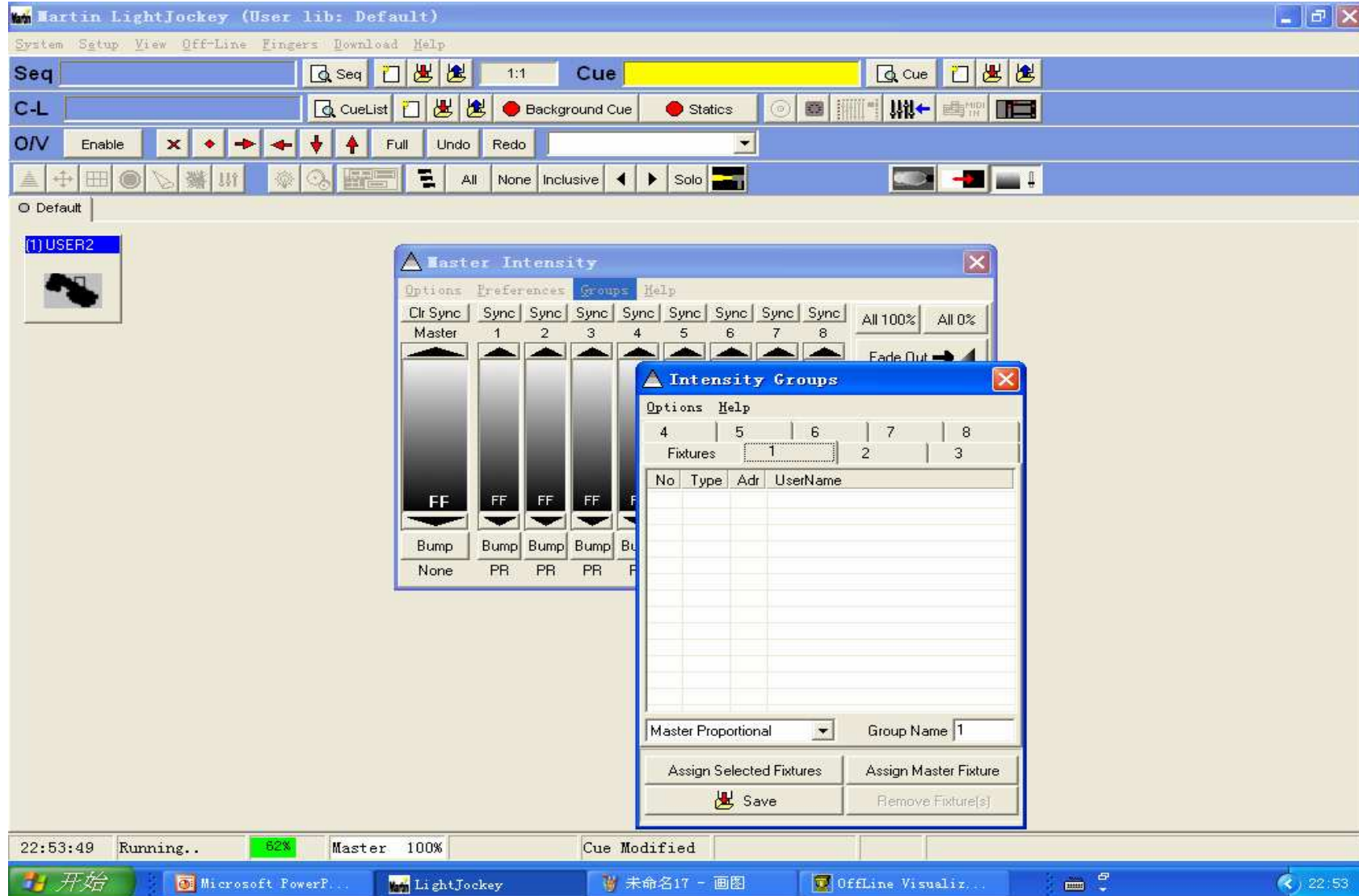
Function	SCRL	Key Combo
*HTP Group 9 - Bump		
*HTP Group 0 - Bump		
*HTP Group 11 - Bump		
*HTP Group 12 - Bump		
HTP Group 1 - Toggle		
HTP Group 2 - Toggle		
HTP Group 3 - Toggle		
HTP Group 4 - Toggle		
HTP Group 5 - Toggle		
HTP Group 6 - Toggle		
HTP Group 7 - Toggle		
HTP Group 8 - Toggle		
HTP Group 9 - Toggle		
HTP Group 0 - Toggle		
HTP Group 11 - Toggle		
HTP Group 12 - Toggle		
<b>Controls</b>		
Fixture Controls		
Intensity		
Movement		
Color		

Seq#	Seq Name	SCRL	Key Combo
0001	1		
0002	2		
0003	3		
0004	2		
0005	4		

22:44:49 Running.. 57% Master 100%

开始 Microsoft PowerP... LightJockey 未命名15 - 画图 OffLine Visualiz... 22:44





The screenshot shows the Martin LightJockey software interface. The main window title is "Martin LightJockey (User lib: Default)". The interface includes a menu bar (System, Setup, View, Off-Line, Fingers, Download, Help), a toolbar with various icons, and a main workspace. A dialog box titled "Edit Hotkeys" is open, showing a list of functions and a table of sequences. A red bracket on the left side of the dialog highlights the "HTP Groups" section.

**分组亮度热键**

Function	SCRL	Key Combo
*Bump Sub 2		
*Bump Sub 3		
*Bump Sub 4		
*Bump Sub 5		
*Bump Sub 6		
*Bump Sub 7		
*Bump Sub 8		
Toggle Bump Master		
Toggle Bump Sub 1		
Toggle Bump Sub 2		
Toggle Bump Sub 3		
Toggle Bump Sub 4		
Toggle Bump Sub 5		
Toggle Bump Sub 6		
Toggle Bump Sub 7		
Toggle Bump Sub 8		
<b>HTP Groups</b>		
*HTP Group 1 - Bump		
*HTP Group 2 - Bump		
*HTP Group 3 - Bump		
*HTP Group 4 - Bump		

Seq#	Seq Name	SCRL	Key Combo
0001	1		
0002	2		
0003	3		
0004	2		
0005	4		



